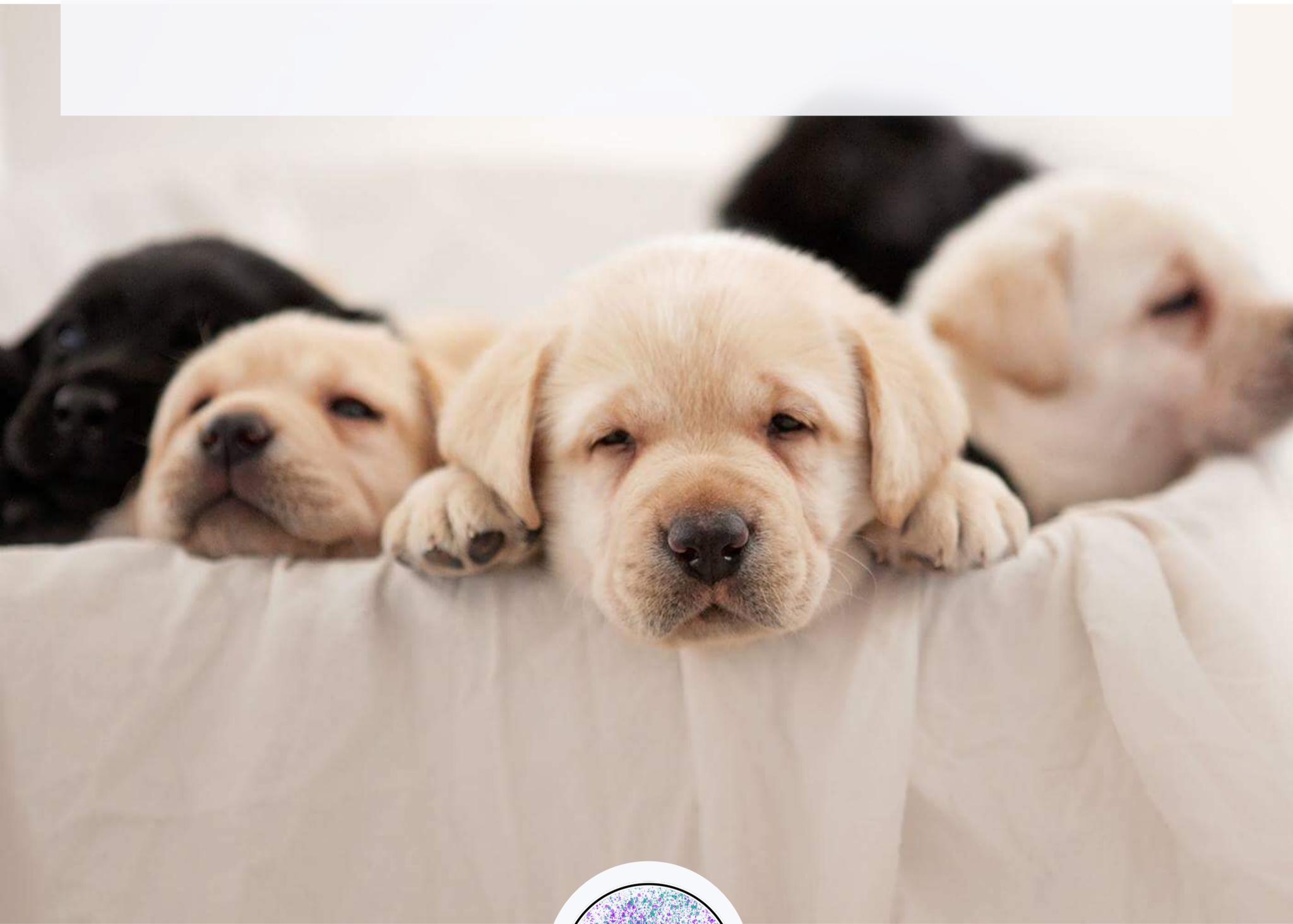


PUPPY PURCHASE





PUPPY INFORMATION

The core business of Shadow Spirit Enterprises is to purpose breed Labrador Retrievers to train and place as assistance dogs throughout Australia for those people with a diagnosed medical condition. Not all puppies are required for assistance work or simply don't present the traits required for the skills needed. Therefore, sometimes there are puppies available for purchase as family pets. **Please note: priority is given first to assistance dog applications and to families who have additional needs.**

Shadow Spirit Enterprises has chosen its breeding lines very carefully, to maintain the traits required for assistance work. All our dogs come to us from working dog lines and are tested for the following;

- Hip and elbow scoring (to reduce the incidence of hip and/or elbow dysplasia occurring).
- DNA tested for PRCD (progressive rod cone disease – a degenerative eye condition in Labrador Retrievers).
- DNA tested for EIC (exercise induced collapse).

Amanda King is registered with Dogs Victoria: 3100043146

Amanda is also registered on the Victorian Pet Exchange Register (PER) to provide accountability for breeding in Victoria.

PER source no: RB103409

Our puppies follow the following program from birth to 8 weeks of age.



ENS – Early Neurological Stimulation. This program has found to be beneficial in;

- Improved cardio vascular performance (heart rate)
- Stronger heart beats
- Stronger adrenal glands
- More tolerance to stress
- Greater resistance to disease

ESI – Early Scent Introduction. This program has found to be beneficial in;

- It has been shown that pups engaged in ESI have earlier and better success at scent detection tasks than puppies not engaged in it. This can be very helpful for dogs working as Assistance Dogs, Search & Rescue, Drug Detection, Noxious Weed Detection, Animal locating and more.

ENS and ESI is run from 3 days to 16 days every day with each pup.

Sound Desensitisation

- Different sounds are played in the background to allow the pups to become familiar with various noises. Sounds include storms, fireworks, motor vehicles, motorised tools, children and more.
- The sounds are played daily throughout the 8 weeks to help in reducing fear in the pups.

Surface experience

- This involves changing surfaces that the puppies are exposed to during weeks 4-8. Playing areas are altered to help puppies develop confidence in being moved from one area to another.
- Different surfaces include concrete, carpet, tiles, gravel, grass and more.

Experience animals

- This involves having the pups around 3-4 weeks meet cats, horses, chickens, and various other animals. This gives the puppies their first idea of different animal scents and can reduce fears later.



Sensory

- This is where the puppies experience different textures and toys. Different toys are placed in the play areas daily and rotated. We also add tins with objects inside, plastic bottles and cardboard cylinders. All these things have different consistencies and feelings for touch and enable the pups to be more familiar with a greater variety of objects they come across later in life.
- The sensory station. This is a play cube with many objects dangling or attached that puppies can walk and squeeze through. We also feed the puppies inside the sensory station. This enables them to be comfortable eating and being touched accidentally by different things. Decreases the risk of accidental surprise causing fearful or aggressive reactions later. Particularly helpful for families with children who may surprise the pup/dog by suddenly moving and/or touching it. The sensory station develops confidence and tolerance to unexpected situations.
- The pups also experience water, ball pits and other fun activities.
- Our pups are raised amongst family, picked up and held often. They have every part of their body touched including sensitive areas such as paws, ears, and mouth

Other

- Our puppies are given 1-2 baths before leaving us.
- They experience several car rides to reduce fears in vehicles.
- The pups are taken for walks in our puppy pram to desensitise to motion.

All our puppies are registered with Dogs Victoria on the limited register (main register by application) and come to you at 8 weeks microchipped, vet checked, wormed and with the first vaccination. We breed all 3 colors of Labrador retriever.

All our puppies are temperament tested at 6 weeks of age. We can assist in the choice of your puppy if you have specific needs.

Shadow Spirit Enterprises puppies are \$5,500. Our policy is a \$1000 deposit to hold a pup and the balance at 6 weeks old. Our general policy is for the deposit to be paid at 1 week old to hold a pup (but you won't know which pup until 6 weeks of age, however, you can elect preferences for colour and sex). We choose our pups for assistance work at 6 weeks old and then customers are allotted a puppy. You will need to arrange pickup of your puppy at 8 weeks of age. For interstate customers, we arrange the flights and invoice you for the cost.

WHAT IF?

The deposit of \$1,000 is required to hold a pup.

If you have paid the deposit and then change your mind we refund \$600 and retain \$400 to cover our administration and associated costs.

If at 6 weeks and during temperament testing we see attributes in the pup that do not suit your need then we will let you know and refund the deposit in full.

If during the 8 weeks the puppy becomes sick/or injured and is no longer available we will refund your payment in full.

Balance of payment is due when the puppies are 6 weeks old. Collection is at 8 weeks of age.

NOTE

We do not refund money if you have changed your mind after pick-up. We do provide refunds if there is a medical reason for the return, but this must be accompanied by a certificate from a vet stating it is an illness the pup arrived at your home with from the breeder and/or there is a congenital defect/lifelong disorder/serious condition.

Please advise us if you select a name for your puppy before collection so we can get them used to hearing it.



PHOTO GALLERY

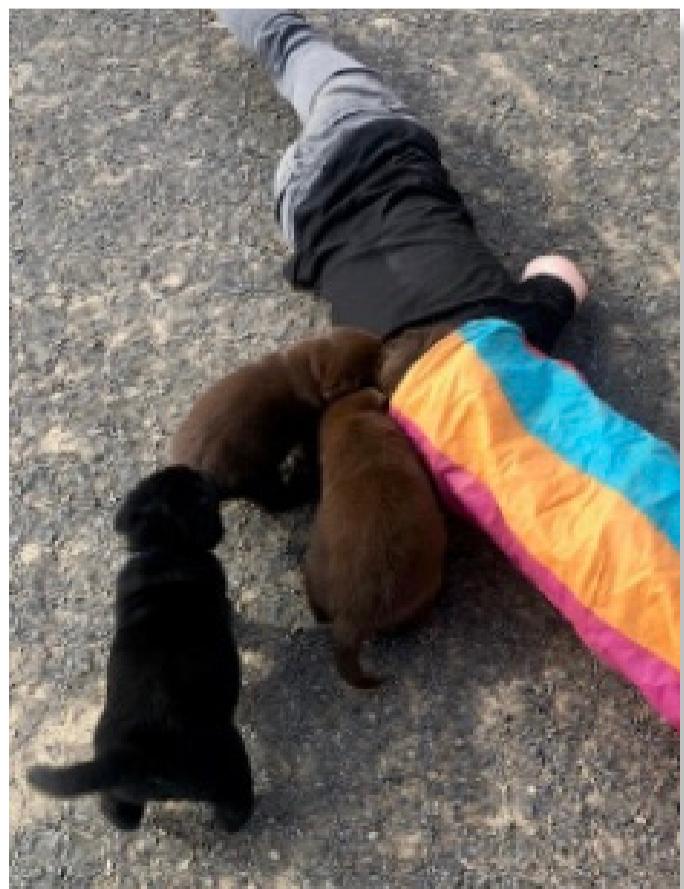
The sensory station – a cube of hanging objects meant for play and desensitisation. Puppies are fed in here for their first meals.

The puppy pram – allowing the pups to get active to smell, hear and see life. Mum also comes and sticks close by. This reduces the stress to mum and pups.

The pram also provides their first experiences of motion and movement in a vehicle.

The puppies are raised inside for the first few weeks. Once they start to move around and eyes begin to open a few toys are placed in the whelping box providing an introduction to different textures and experiences.

The biggest challenge is preventing mum from stealing the toys!





Interactions with people, toys, and socialising with other dogs in various environments. Handled from birth. Experiences with tunnel play, bubbles, water, ball pits and noisy objects to decrease fears of new experiences.

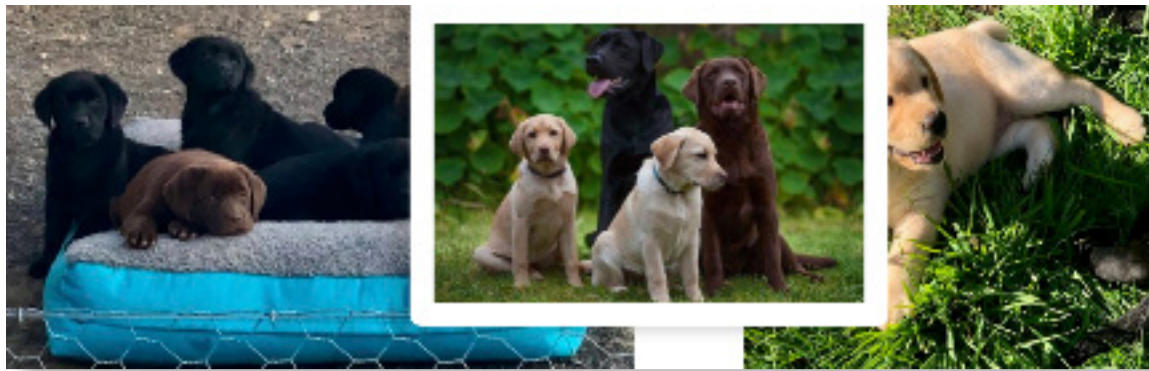
Providing various activities to expose pups to small degrees of stress. This builds future resilience for stressful occurrences. The way this is done is to allow pups to experience the feelings of water via 1-5 baths from birth to 8 weeks, spend time around other animals including ducks, chickens, geese, cats, sheep, horses, and cows (note* your pup may be exposed to a selection of these activities or all of them). The 'Sock Game' enables puppies to feel items on their paws. This game sees them wearing baby socks for just a few seconds until they fall off during play. Dogs often require medical treatments to paws and legs or need to wear boots throughout their lifetime. This provides a first fun association of items on their paws/legs that appears as just fun.





The dogs and puppies at Shadow Spirit Enterprises are treated by vets throughout their pregnancy, whelping, recovery, and puppy development. All our dogs are confirmed as pregnant by ultrasound around 35 days. An x-ray is performed at 50+ days to help confirm number of puppies to expect. This allows us to have more knowledge during whelping to help mum by knowing how many puppies to expect, thus decreasing the chances of puppies remaining unborn/stuck in mum.

The health of mum is a priority. Mum and pups are vet checked 24 hours following delivery and mum's health monitored closely. Nails are clipped on pups to protect mum and ensure she does not avoid feeding due to discomfort. Mum is given as much access to food and water as she would like following the first weeks of whelping to maximise her health and energy. Calcium levels are monitored also. Once puppies begin their first solid foods (our special formula), mum is also provided with this to ensure health.



At 6 weeks of age the puppies are vet checked, vaccinated, and microchipped. A vet record is provided. Puppies are wormed at 2, 4, 6 and 8 weeks of age. All customers are provided with a puppy care pack detailing their next worming and vaccination dates, tips and tricks on puppy raising and developmental information.

Dogs begin the weaning process for puppies by themselves around 4 weeks of age. This starts with mum making it increasingly difficult for pups to feed for any length of time. They do this by spending more time away from the pups, sitting or standing during feeding and walking off as pups feed. This is a natural process. Solid foods are introduced around 4-5 weeks for the pups (sometimes earlier in larger litters to assist mum or for health reasons).

We assist in the process of weaning and building separation resilience in the following ways;

- Handling puppies to experience being with people and being away from mum (note in the first 4-5 weeks mum is always present wherever puppies go to ensure no stress to mum and minimal on pups).
- Placing puppies around 4 weeks in outside environments to play with mum. Once pups are comfortable mum comes inside and pups stay out for a further 5-10 minutes of play. Times are increased as puppies become more independent.
- When outside on walks in the puppy pram mum always comes along but is able to enjoy off lead freedom, allowing her to release some energy, gain mental stimulation and also come and check back on puppies whenever she likes.
- As puppies develop and are aged over 5 weeks, time away from mum is increased in small increments until at 7 weeks of age they can stay away from mum all day and are properly weaned.
- At 8 weeks of age the puppies are confident, appropriately weaned and possess a healthy dose of self-esteem placing them in a great position to start life with their new families.

The ultimate aim of Shadow Spirit Enterprises is to provide puppies who are mentally stable, have good self-assurance and enjoy human interactions and company.

The puppies are exposed to all these experiences and activities in an 8-week period, and it places them in a good position to develop into healthy adult dogs. However, families must continue to provide mentally stimulating environments and companionship, as well as participating in sound, force-free training methods to continue this positive development.

Shadow Spirit Enterprises is always on hand to provide guidance throughout the life of our dogs and encourage customers to remain in contact and send through any photos or stories about their dog as they grow.